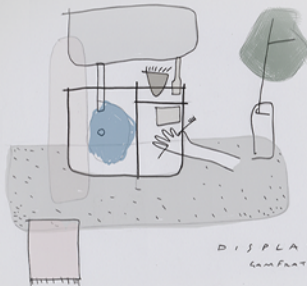


Display on Display

Fuorisalone: 12-17 April
 Showroom Ceramica Globo
 Corso Monforte 15, Milan

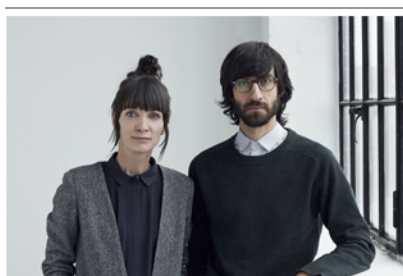
Press preview: 11 April 2016, 10:00-19:00

For information please contact: Press Office R+W
 Cora Manzi cora.manzi@r-w.it



Save the Date: Display on Display

Ceramica Globo will preview the collection inside a museum-concept exhibition in the Showroom of Corso Monforte 15, from 11 to 17 April, where the Display collection will literally be on display: each washbasin will be featured in a dedicated space, where its essential geometries will be combined with different patterns and colours like the scenery of a theatre.



New collaboration with GamFratesi

On occasion of Fuorisalone 2016, Ceramica Globo announces its collaboration with the Italian-Danish duo GamFratesi, two of the most acclaimed and renowned young designers in recent years. For the company the designers have created Display, a collection of four spacious square-shaped washbasins with clean lines.



Display collection design GamFratesi

Display focuses on gestures, objects and obviously on people who use the bathroom everyday: countertops, spaces, depth and dimensions have been created to respond to human gestures in an original and customisable way. The four washbasins each have a different size and include a set of built-in ceramic tops alongside the tub. The result is a monolithic object that incorporates a game of different heights, of wet and dry,

where nothing is left to chance and everything is in place and within reach. Display is a personal, intimate collection with a richly detailed profile whose combination of vertical and horizontal lines is inspired by neoplastic aesthetics.



Press review

DESIGNEDOO.IT - 03.2016
 DESIGNERBLOG.IT - 03.2016
 GUIDAXCASA.IT - 03.2016